

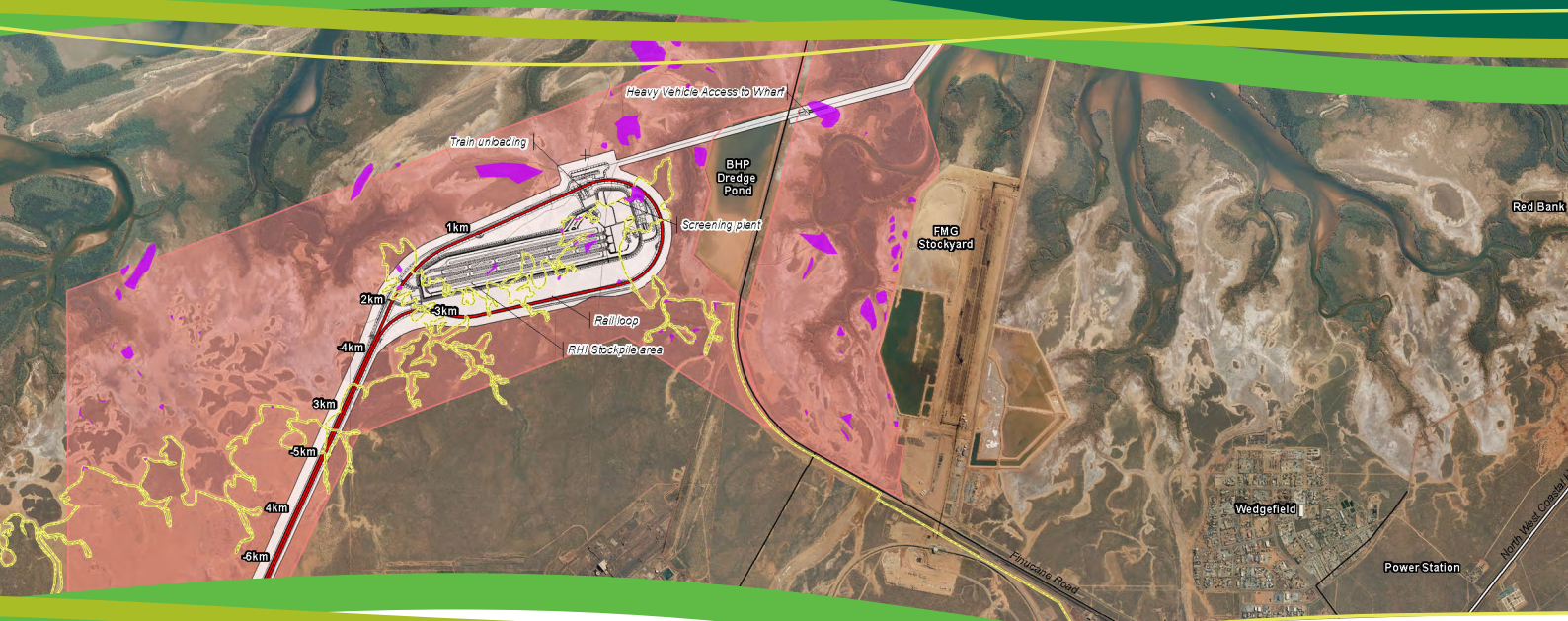
Roy Hill Iron Ore (Package 3) Early Contractor Involvement (ECI)

PROJECT DETAILS:

Location: Port Hedland, Western Australia

Contract Value: Confidential (2011)

Contract Period: June 2011 - September 2011



CLIENT: Roy Hill Infrastructure Pty Ltd

Scope of Work:

The Clough Forge Joint Venture (CFJV) commenced work on its first project, winning the Early Contractor Involvement (ECI) for Package 3, Portside Materials Handling Facilities, for Hancock Prospecting's 7.2 billion Roy Hill Iron Ore Project.

The scope of work involves a detailed review of all preliminary and Bankable Feasibility Study (BFS) documentation in a collaborative, open book approach with the client, to assist with development of final scope, schedule and contractual basis (including risk apportionment) to deliver a price for the construction phase and the Package 3 works.

Package 3 consists of the rail loop and stockyards for the port end of the 55Mtpa iron ore mine. Key aspects include a car dumper, screen building, stackers and a single reclaimer along with associated conveyors and infrastructure within the stockyards and rail loop. The EPC phase of the project is expected to employ 450 personnel at peak. First ore is scheduled to be shipped by Q1 2014.